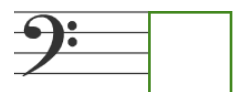
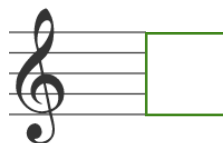
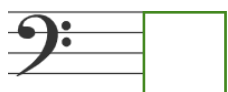
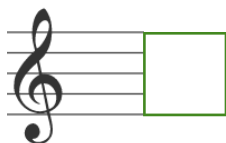
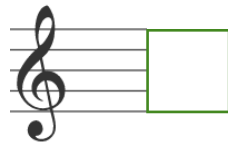
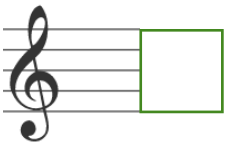
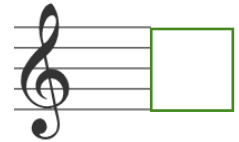
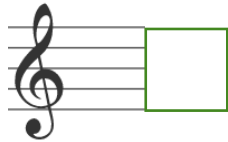
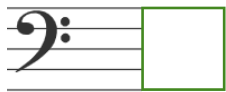
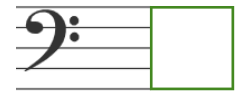
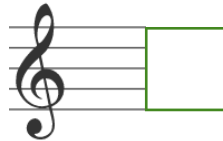
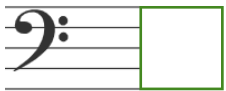
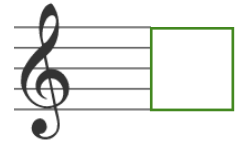
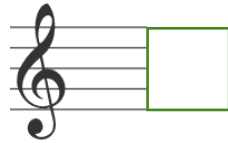
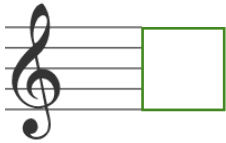




IN EACH BOX, WRITE A **T** IF IT'S A
TREBLE CLEF OR A **B** IF IT'S A BASS
CLEF. TIME YOURSELF TO SEE HOW
QUICKLY YOU CAN IDENTIFY THEM ALL!

TIME:





IN EACH BOX, WRITE A **T** IF IT'S A
TREBLE CLEF OR A **B** IF IT'S A BASS
CLEF. TIME YOURSELF TO SEE HOW
QUICKLY YOU CAN IDENTIFY THEM ALL!

TIME:

